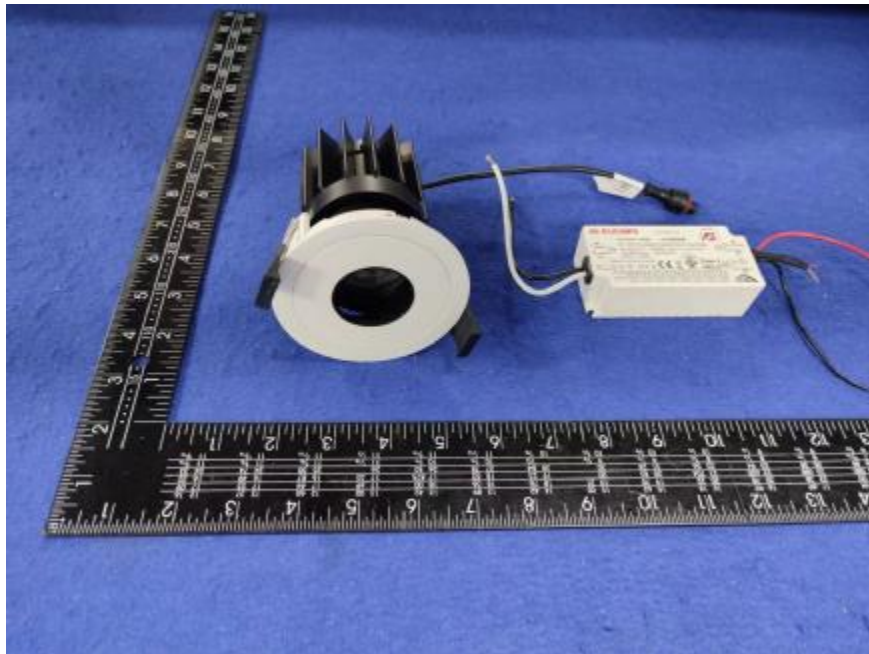


Luminaire Photograph



Light Output Ratio:	54.7%	
Luminaire Power:	13.81 W	
SHR Nominal:	0.00	Calculated using the TM5
SHR Maximum:	0.30	fine grid method.

C Range: 0 - 360DEG
C Interval: 30.0DEG
Test Speed: HIGH
Temperature: 25.3 °C
Operators: zoe
Test Date: 2023-12-16

Range: 0 - 180DEG
Interval: 1.0DEG
Test System: EVERFINE GO-SPEX500_V1 SYSTEM V2.00.461
Humidity: 65.0%
Test Distance: 3.160m [K=1.0000]
Remarks: LAMP: BXRE-30G1000-A-83 Ra:90
LENS: PM-1082 15R
DRIVER: PUP20A-1WMC 350mA
30minutes warm-up

LUMINOUS INTENSITY DISTRIBUTION DIAGRAM

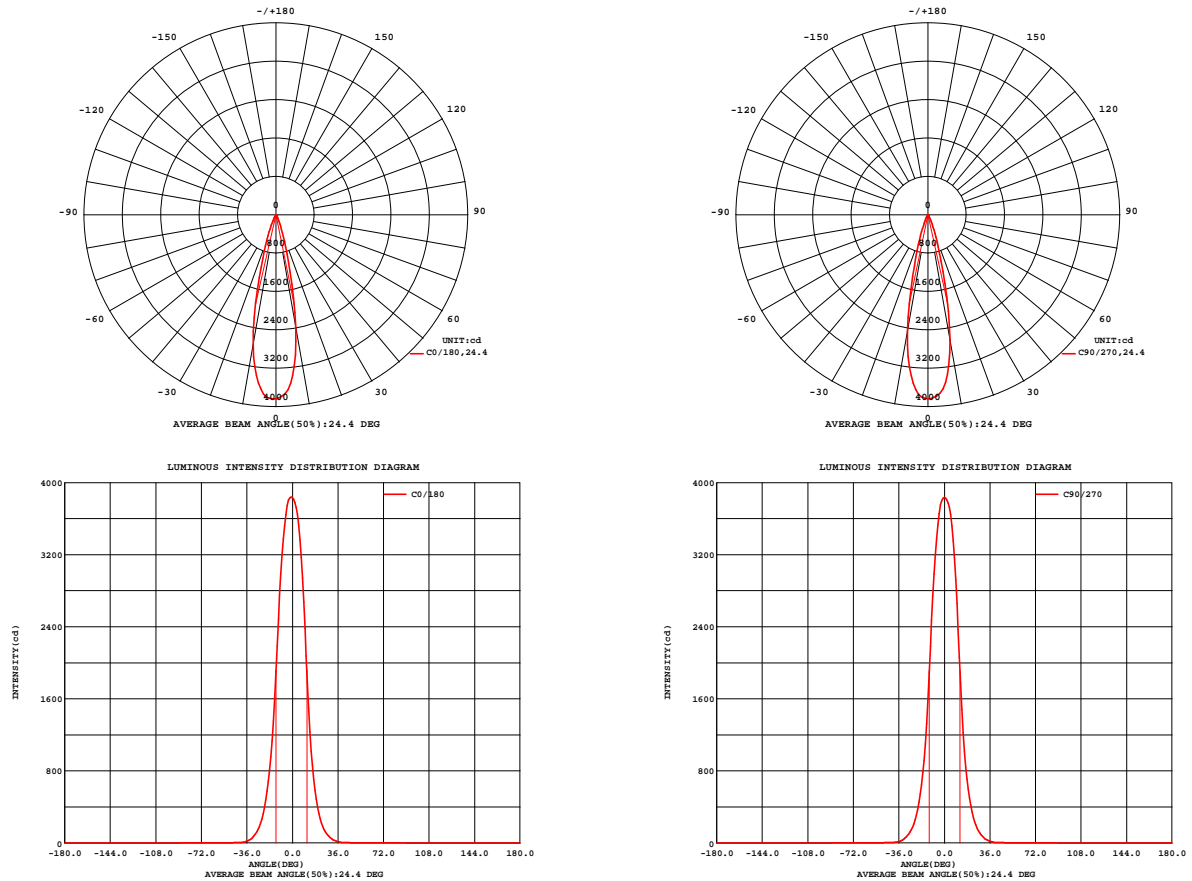


Fig. C0/C180

Fig. C90/C270

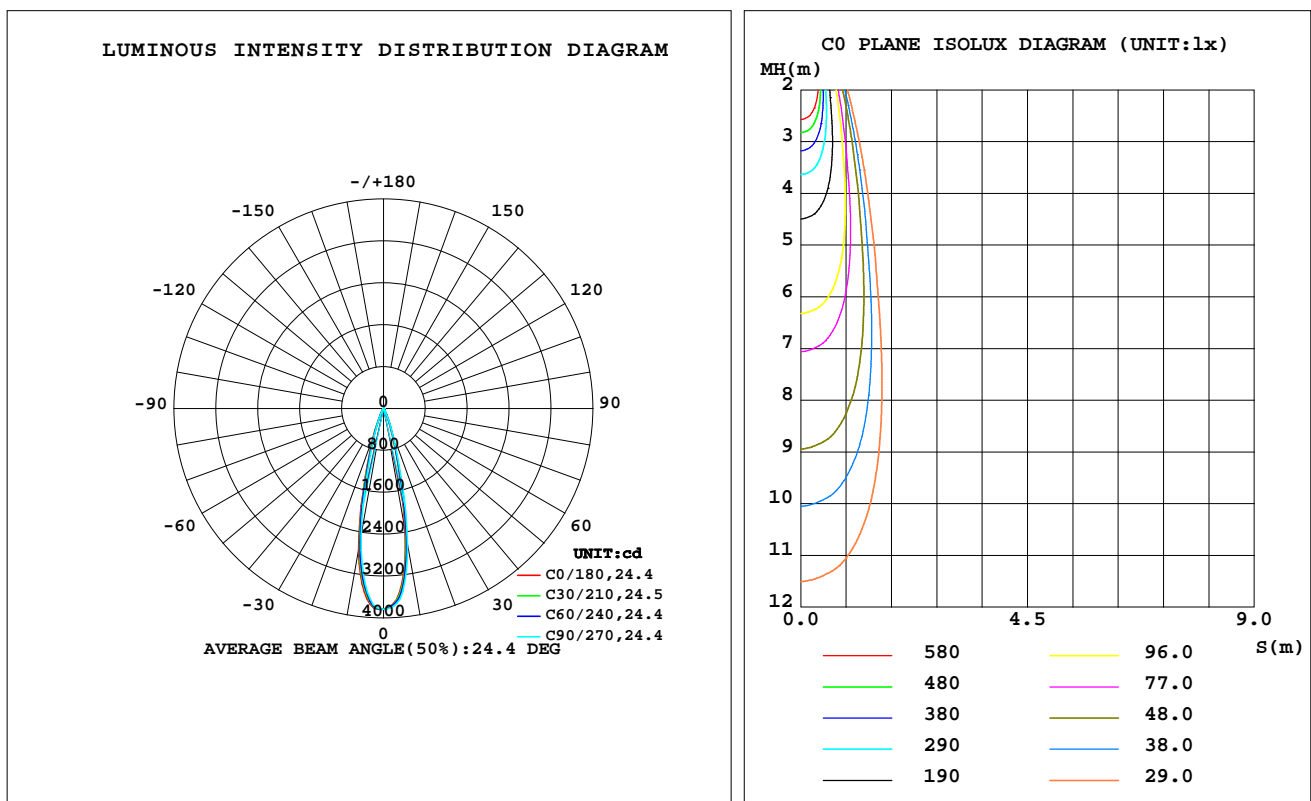
C Range: 0 - 360DEG
C Interval: 30.0DEG
Test Speed: HIGH
Temperature: 25.3 °C
Operators: zoe
Test Date: 2023-12-16

Range: 0 - 180DEG
Interval: 1.0DEG
Test System: EVERFINE GO-SPEX500_V1 SYSTEM V2.00.461
Humidity: 65.0%
Test Distance: 3.160m [K=1.0000]
Remarks: LAMP: BXRE-30G1000-A-83 Ra: 90
LENS: PM-1082 15R
DRIVER: PUP20A-1WMC 350mA
30minutes warm-up

LUMINAIRE PHOTOMETRIC TEST REPORT

Test:U:120.13V I:0.1160A P:13.813W PF:0.9900 Freq:59.98Hz Lamp Flux:1402.44x1 lm		
NAME: 2318.115-LEA-14	TYPE:	WEIGHT:
SPEC.: 3000K	DIM.:	SERIAL No.: 2312161455
MFR.: RISE	SUR.: 0.0007065m2	Shielding Angle:

DATA OF LAMP		PHOTOMETRIC DATA				Eff: 55.53 lm/W
MODEL	Bridgelux	I _{max} (cd)	3840	S/MH(C0/180)		0.41
NOMINAL POWER(W)	14	LOR(%)	54.7	S/MH(C90/270)		0.38
RATED VOLTAGE(V)	120	TOTAL FLUX(lm)	767.11	UP,DN(C0-180)		0.0,27.6
NOMINAL FLUX(lm)	1402.44	CIE CLASS	DIRECT	UP,DN(C180-360)		0.0,27.1
LAMPS INSIDE	1	up(%)	0.0	CIBSE SHR NOM		0.00
TEST VOLTAGE(V)	120	down(%)	54.7	CIBSE SHR MAX		0.30



C Range: 0 - 360DEG
C Interval: 30.0DEG
Test Speed: HIGH
Temperature:25.3℃
Operators:zoe
Test Date:2023-12-16

Range: 0 - 180DEG
Interval: 1.0DEG
Test System:EVERFINE GO-SPEX500_V1 SYSTEM V2.00.461
Humidity:65.0%
Test Distance:3.160m [K=1.0000]
Remarks: LAMP:BXRE-30G1000-A-83 Ra:90
LENS:PM-1082 15R
DRIVER:PUP20A-1WMC 350mA
30minutes warm-up

ZONAL FLUX DIAGRAM

ZONAL FLUX DIAGRAM:

	C0	C45	C90	C135	C180	C225	C270	C315		zone	total	%lum,lamp
10	2383	2498	2657	2774	2752	2629	2471	2363	0- 10	309.8	309.8	40.4,22.1
20	399.6	444.1	497.0	559.6	574.0	529.8	453.6	408.5	10- 20	340.1	649.9	84.7,46.3
30	58.91	66.37	74.95	84.37	81.94	78.57	66.78	59.58	20- 30	95.17	745.0	97.1,53.1
40	5.647	5.555	6.853	8.267	6.839	7.471	6.992	6.576	30- 40	16.99	762.0	99.3,54.3
50	1.905	1.557	2.502	3.280	2.189	2.890	2.593	2.338	40- 50	3.475	765.5	99.8,54.6
60	0.2845	0.2403	0.4579	0.9229	0.7655	0.7520	0.8686	0.7432	50- 60	0.9612	766.5	99.9,54.7
70	0.1500	0.1407	0.2167	0.3852	0.3594	0.3438	0.3637	0.2852	60- 70	0.4530	766.9	100,54.7
80	0.0654	0.0617	0.0719	0.0883	0.0912	0.0721	0.0781	0.0554	70- 80	0.1723	767.1	100,54.7
90	0	0	0	0	0	0	0	0	80- 90	0.0298	767.1	100,54.7
100	0	0	0	0	0	0	0	0	90-100	0	767.1	100,54.7
110	0	0	0	0	0	0	0	0	100-110	0	767.1	100,54.7
120	0	0	0	0	0	0	0	0	110-120	0	767.1	100,54.7
130	0	0	0	0	0	0	0	0	120-130	0	767.1	100,54.7
140	0	0	0	0	0	0	0	0	130-140	0	767.1	100,54.7
150	0	0	0	0	0	0	0	0	140-150	0	767.1	100,54.7
160	0	0	0	0	0	0	0	0	150-160	0	767.1	100,54.7
170	0	0	0	0	0	0	0	0	160-170	0	767.1	100,54.7
180	0	0	0	0	0	0	0	0	170-180	0	767.1	100,54.7
DEG	LUMINOUS INTENSITY:cd									UNIT:lm		

C Range: 0 - 360DEG
C Interval: 30.0DEG
Test Speed: HIGH
Temperature:25.3℃
Operators:zoe
Test Date:2023-12-16

Range: 0 - 180DEG
Interval: 1.0DEG
Test System:EVERFINE GO-SPEX500_V1 SYSTEM V2.00.461
Humidity:65.0%
Test Distance:3.160m [K=1.0000]
Remarks: LAMP:BXRE-30G1000-A-83 Ra:90
LENS:PM-1082 15R
DRIVER:PUP20A-1WMC 350mA
30minutes warm-up

LUMINANCE LIMITATION CURVES

Test:U:120.13V I:0.1160A P:13.813W PF:0.9900 Freq:59.98Hz
Lamp Flux:1402.44x1 lm

NAME: 2318.115-LEA-14

TYPE:

WEIGHT:

SPEC.: 3000K

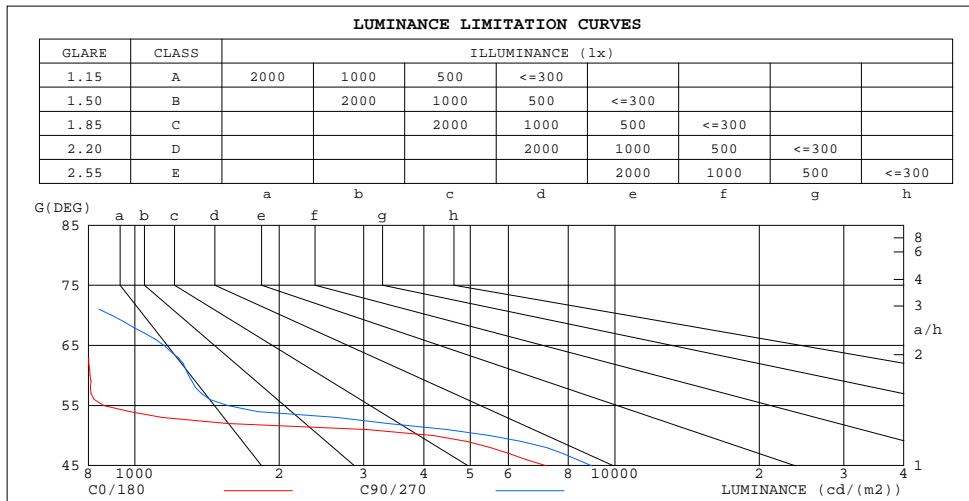
DIM.:

SERIAL No.: 2312161455

MFR.: RISE

SUR.: 0.0007065m2

Shielding Angle:



LUMINANCE cd/(m2)		
G(180)	C0/180	C90/270
85	432	577
80	534	586
75	565	691
70	622	896
65	769	1151
60	806	1295
55	861	1564
50	4200	5505
45	7193	8952

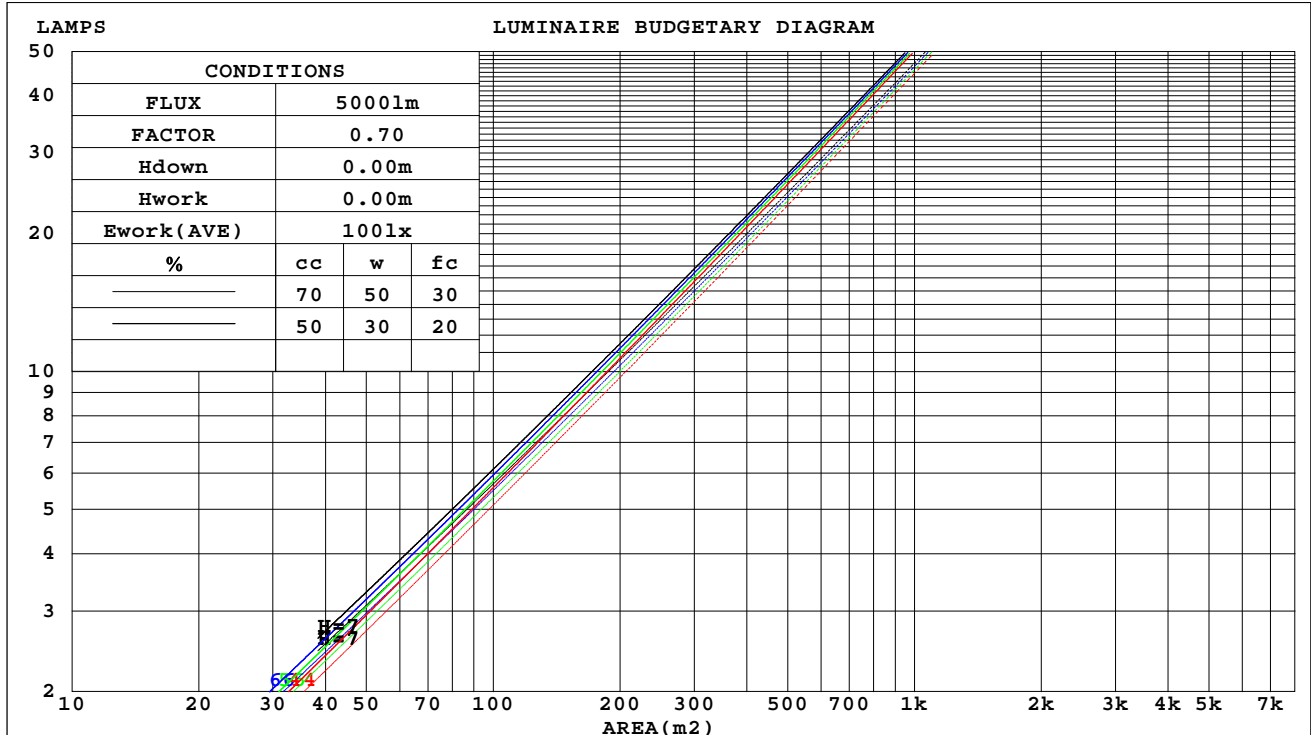
C Range: 0 - 360DEG
C Interval: 30.0DEG
Test Speed: HIGH
Temperature:25.3℃
Operators:zoe
Test Date:2023-12-16

Range: 0 - 180DEG
Interval: 1.0DEG
Test System:EVERFINE GO-SPEX500_V1 SYSTEM V2.00.461
Humidity:65.0%
Test Distance:3.160m [K=1.0000]
Remarks: LAMP:BXRE-30G1000-A-83 Ra:90
LENS:PM-1082 15R
DRIVER:PUP20A-1WMC 350mA
30minutes warm-up

CU AND LUMINAIRE BUDGETARY ESTIMATE DIAGRAM

Test:U:120.13V I:0.1160A P:13.813W PF:0.9900 Freq:59.98Hz Lamp Flux:1402.44x1 lm		
NAME: 2318.115-LEA-14	TYPE:	WEIGHT:
SPEC.: 3000K	DIM.:	SERIAL No.: 2312161455
MFR.: RISE	SUR.: 0.0007065m2	Shielding Angle:

cc	80%			70%			50%			30%			10%			0
w	50%	30%	10%	50%	30%	10%	50%	30%	10%	50%	30%	10%	50%	30%	10%	0
fc	20%			20%			20%			20%			20%			0
RCR	RCR:Room Cavity Ratio						Coefficients of Utilization(CU)									
0.0	.65	.65	.65	.64	.64	.64	.61	.61	.61	.58	.58	.58	.56	.56	.56	.55
1.0	.62	.61	.60	.61	.60	.59	.59	.58	.57	.57	.56	.56	.55	.54	.54	.53
2.0	.59	.58	.56	.58	.57	.56	.57	.56	.55	.55	.54	.53	.54	.53	.52	.52
3.0	.57	.55	.54	.56	.54	.53	.55	.53	.52	.54	.52	.52	.52	.52	.51	.50
4.0	.55	.53	.51	.54	.52	.51	.53	.52	.50	.52	.51	.50	.51	.50	.49	.49
5.0	.53	.51	.49	.53	.51	.49	.52	.50	.49	.51	.49	.48	.50	.49	.48	.47
6.0	.51	.49	.48	.51	.49	.48	.50	.49	.47	.50	.48	.47	.49	.48	.47	.46
7.0	.50	.48	.46	.50	.48	.46	.49	.47	.46	.48	.47	.46	.48	.47	.46	.45
8.0	.49	.46	.45	.48	.46	.45	.48	.46	.45	.47	.46	.45	.47	.45	.44	.44
9.0	.47	.45	.44	.47	.45	.44	.47	.45	.44	.46	.45	.44	.46	.44	.43	.43
10.0	.46	.44	.43	.46	.44	.43	.46	.44	.43	.45	.44	.42	.45	.43	.42	.42



C Range: 0 - 360DEG
C Interval: 30.0DEG
Test Speed: HIGH
Temperature:25.3℃
Operators:zoe
Test Date:2023-12-16

Range: 0 - 180DEG
Interval: 1.0DEG
Test System:EVERFINE GO-SPEX500_V1 SYSTEM V2.00.461
Humidity:65.0%
Test Distance:3.160m [K=1.0000]
Remarks: LAMP:BXRE-30G1000-A-83 Ra:90
LENS:PM-1082 15R
DRIVER:PUP20A-1WMC 350mA
30minutes warm-up

WEC AND CCEC

Test:U:120.13V I:0.1160A P:13.813W PF:0.9900 Freq:59.98Hz Lamp Flux:1402.44x1 lm		
NAME: 2318.115-LEA-14	TYPE:	WEIGHT:
SPEC.: 3000K	DIM.:	SERIAL No.: 2312161455
MFR.: RISE	SUR.: 0.0007065m2	Shielding Angle:

cc	80%			70%			50%			30%			10%			0
w	50%	30%	10%	50%	30%	10%	50%	30%	10%	50%	30%	10%	50%	30%	10%	0
fc	20%			20%			20%			20%			20%			0
RCR	RCR:Room Cavity Ratio						Wall Exitance Coefficients(WEC)									
0.0																
1.0	.072	.041	.013	.068	.039	.012	.061	.035	.011	.055	.032	.010	.049	.029	.009	
2.0	.066	.036	.011	.063	.035	.011	.057	.032	.010	.052	.029	.009	.048	.027	.008	
3.0	.061	.033	.010	.059	.031	.009	.054	.029	.009	.050	.027	.008	.046	.025	.008	
4.0	.057	.030	.009	.055	.029	.009	.051	.027	.008	.048	.026	.008	.044	.024	.007	
5.0	.054	.027	.008	.052	.027	.008	.049	.025	.007	.046	.024	.007	.043	.023	.007	
6.0	.051	.025	.007	.049	.025	.007	.046	.024	.007	.044	.023	.007	.041	.022	.006	
7.0	.048	.024	.007	.047	.023	.007	.044	.022	.006	.042	.022	.006	.040	.021	.006	
8.0	.046	.022	.006	.045	.022	.006	.043	.021	.006	.041	.021	.006	.039	.020	.006	
9.0	.044	.021	.006	.043	.021	.006	.041	.020	.006	.039	.020	.006	.037	.019	.005	
10.0	.042	.020	.006	.041	.020	.006	.039	.019	.005	.038	.019	.005	.036	.018	.005	

cc	80%			70%			50%			30%			10%			0
w	50%	30%	10%	50%	30%	10%	50%	30%	10%	50%	30%	10%	50%	30%	10%	0
fc	20%			20%			20%			20%			20%			0
RCR	RCR:Room Cavity Ratio			Ceiling Cavity Exitance Coefficients(CCEC)												
0.0	.104	.104	.104	.089	.089	.089	.061	.061	.061	.035	.035	.035	.011	.011	.011	
1.0	.092	.086	.081	.079	.074	.070	.054	.051	.048	.031	.029	.028	.010	.009	.009	
2.0	.082	.073	.065	.070	.062	.056	.048	.043	.039	.028	.025	.023	.009	.008	.007	
3.0	.073	.062	.053	.063	.053	.046	.043	.037	.032	.025	.022	.019	.008	.007	.006	
4.0	.066	.053	.044	.057	.046	.038	.039	.032	.027	.023	.019	.016	.007	.006	.005	
5.0	.060	.047	.037	.052	.040	.032	.036	.028	.022	.021	.017	.013	.007	.005	.004	
6.0	.055	.041	.031	.048	.036	.027	.033	.025	.019	.019	.015	.011	.006	.005	.004	
7.0	.051	.037	.026	.044	.032	.023	.030	.022	.016	.018	.013	.010	.006	.004	.003	
8.0	.048	.033	.023	.041	.029	.020	.028	.020	.014	.016	.012	.008	.005	.004	.003	
9.0	.044	.030	.020	.038	.026	.017	.027	.018	.012	.015	.011	.007	.005	.004	.002	
10.0	.042	.027	.017	.036	.024	.015	.025	.017	.011	.015	.010	.006	.005	.003	.002	

C Range: 0 - 360DEG
C Interval: 30.0DEG
Test Speed: HIGH
Temperature:25.3℃
Operators:zoe
Test Date:2023-12-16

Range: 0 - 180DEG
Interval: 1.0DEG
Test System:EVERFINE GO-SPEX500_V1 SYSTEM V2.00.461
Humidity:65.0%
Test Distance:3.160m [K=1.0000]
Remarks: LAMP:BXRE-30G1000-A-83 Ra:90
LENS:PM-1082 15R
DRIVER:PUP20A-1WMC 350mA
30minutes warm-up

UGR(Unified Glare Rating) Table

Test:U:120.13V I:0.1160A P:13.813W PF:0.9900 Freq:59.98Hz Lamp Flux:1402.44x1 lm										
NAME: 2318.115-LEA-14					TYPE:			WEIGHT:		
SPEC.: 3000K					DIM.:			SERIAL No.: 2312161455		
MFR.: RISE					SUR.: 0.0007065m2			Shielding Angle:		
ceiling/cavity	0.7	0.7	0.5	0.5	0.3	0.7	0.7	0.5	0.5	0.3
walls	0.5	0.3	0.5	0.3	0.3	0.5	0.3	0.5	0.3	0.3
working plane	0.2	0.2	0.2	0.2	0.2	0.2	0.2	0.2	0.2	0.2
Room dimensions	Viewed crosswise					Viewed endwise				
x = 2H y = 2H	6.8	7.4	7.0	7.6	7.7	7.8	8.4	8.0	8.6	8.7
3H	6.7	7.2	6.9	7.4	7.6	7.7	8.2	7.9	8.4	8.6
4H	6.6	7.2	6.9	7.4	7.6	7.6	8.1	7.9	8.3	8.6
6H	6.5	7.0	6.8	7.3	7.5	7.5	8.0	7.8	8.3	8.5
8H	6.5	7.0	6.8	7.2	7.5	7.5	8.0	7.8	8.2	8.5
12H	6.4	6.9	6.8	7.2	7.4	7.4	7.9	7.7	8.2	8.4
4H 2H	6.6	7.1	6.8	7.3	7.5	7.6	8.1	7.8	8.3	8.5
3H	6.4	6.9	6.7	7.2	7.4	7.4	7.9	7.7	8.2	8.4
4H	6.4	6.8	6.7	7.1	7.4	7.3	7.8	7.7	8.1	8.4
6H	6.3	6.7	6.6	7.0	7.3	7.3	7.6	7.6	8.0	8.3
8H	6.2	6.6	6.6	6.9	7.3	7.2	7.6	7.6	7.9	8.3
12H	6.2	6.5	6.6	6.9	7.3	7.2	7.5	7.6	7.9	8.2
8H 4H	6.2	6.6	6.6	6.9	7.3	7.2	7.6	7.6	7.9	8.3
6H	6.1	6.4	6.5	6.8	7.2	7.1	7.4	7.5	7.8	8.2
8H	6.1	6.3	6.5	6.7	7.2	7.0	7.3	7.5	7.7	8.2
12H	6.0	6.2	6.5	6.7	7.1	7.0	7.2	7.4	7.7	8.1
12H 4H	6.2	6.5	6.6	6.9	7.2	7.1	7.5	7.5	7.8	8.2
6H	6.1	6.3	6.5	6.7	7.2	7.0	7.3	7.5	7.7	8.2
8H	6.0	6.2	6.5	6.7	7.1	7.0	7.2	7.4	7.6	8.1
Variations with the observer position at spacings(CIE Pub.117):										
S = 1.0H	+ 4.0 / - 8.3					+ 4.9 / - 8.6				
1.5H	+ 5.7 / - 9.1					+ 6.6 / - 9.8				
2.0H	+ 6.4 / - 5.1					+ 6.6 / - 6.0				

CIE Pub.117, 1402 lm Total Lamp Luminous Flux Correct (8log(F/F0) = 1.2)
Area: 0.0007065 m2

C Range: 0 - 360DEG
C Interval: 30.0DEG
Test Speed: HIGH
Temperature:25.3℃
Operators:zoe
Test Date:2023-12-16

Range: 0 - 180DEG
Interval: 1.0DEG
Test System:EVERFINE GO-SPEX500_V1 SYSTEM V2.00.461
Humidity:65.0%
Test Distance:3.160m [K=1.0000]
Remarks: LAMP:BXRE-30G1000-A-83 Ra:90
LENS:PM-1082 15R
DRIVER:PUP20A-1WMC 350mA
30minutes warm-up

UTILIZATION FACTORS TABLE

Test:U:120.13V I:0.1160A P:13.813W PF:0.9900 Freq:59.98Hz Lamp Flux:1402.44x1 lm		
NAME: 2318.115-LEA-14	TYPE:	WEIGHT:
SPEC.: 3000K	DIM.:	SERIAL No.: 2312161455
MFR.: RISE	SUR.: 0.0007065m2	Shielding Angle:

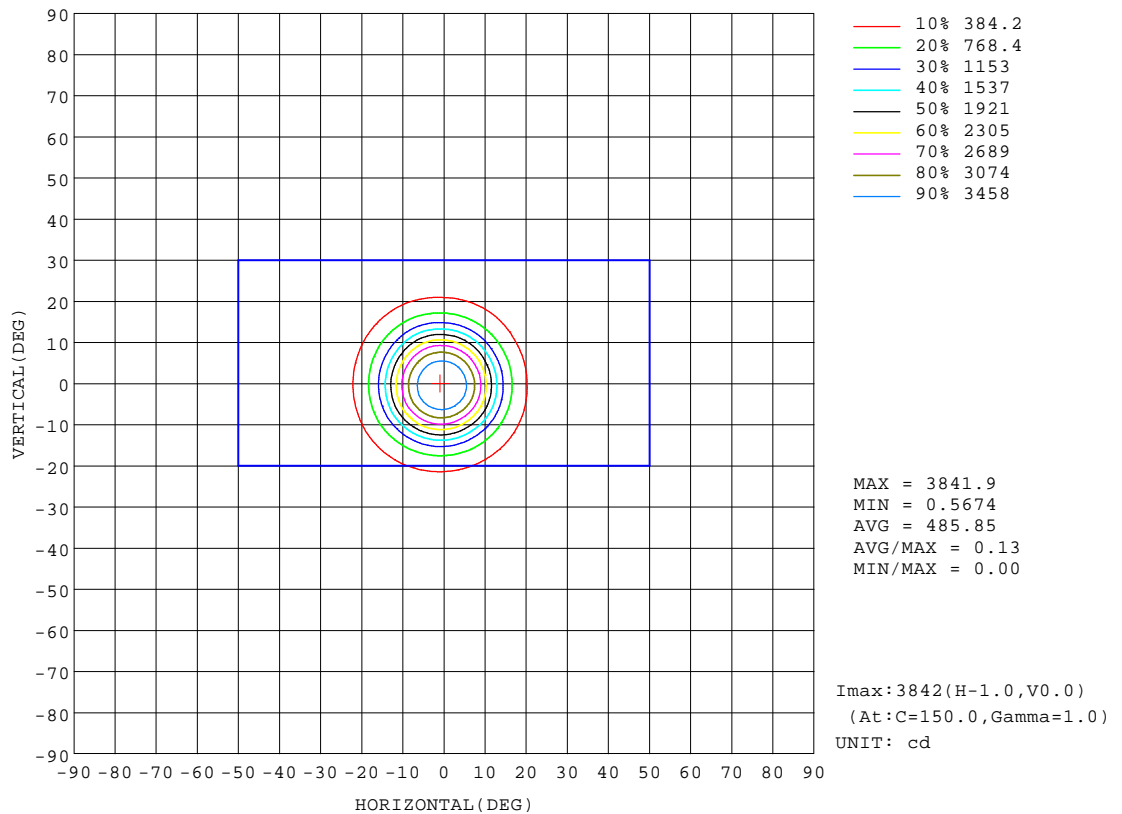
REFLECTANCE										
Ceiling	0.8	0.8	0.8	0.7	0.7	0.7	0.5	0.5	0.5	0
Walls	0.7	0.5	0.3	0.7	0.5	0.3	0.7	0.5	0.3	0
Working plane	0.2	0.2	0.2	0.2	0.2	0.2	0.2	0.2	0.2	0
ROOM INDEX	UTILIZATION FACTORS(PERCENT) $k(RI) \times RCR = 5$									
k = 0.60	50	47	45	50	47	45	49	46	45	43
0.80	54	51	49	53	51	49	53	50	49	47
1.00	56	53	51	55	53	51	54	53	51	49
1.25	58	55	53	57	55	53	56	54	53	51
1.50	59	57	55	58	56	55	57	55	54	52
2.00	60	58	56	59	57	56	58	56	55	53
2.50	61	59	58	60	58	57	58	57	56	53
3.00	62	60	59	61	59	58	59	58	57	53
4.00	63	61	60	62	60	59	60	59	58	54
5.00	63	62	61	62	61	60	60	59	59	55
ROOM INDEX	UF(total)									Direct
According to DIN EN 13032-2 2004			Suspended					SHRNOM = 1.25		

C Range: 0 - 360DEG
C Interval: 30.0DEG
Test Speed: HIGH
Temperature:25.3℃
Operators:zoe
Test Date:2023-12-16

Range: 0 - 180DEG
Interval: 1.0DEG
Test System:EVERFINE GO-SPEX500_V1 SYSTEM V2.00.461
Humidity:65.0%
Test Distance:3.160m [K=1.0000]
Remarks: LAMP:BXRE-30G1000-A-83 Ra:90
LENS:PM-1082 15R
DRIVER:PUP20A-1WMC 350mA
30minutes warm-up

ISOCANDELA DIAGRAM

Test:U:120.13V I:0.1160A P:13.813W PF:0.9900 Freq:59.98Hz Lamp Flux:1402.44x1 lm		
NAME: 2318.115-LEA-14	TYPE:	WEIGHT:
SPEC.: 3000K	DIM.:	SERIAL No.: 2312161455
MFR.: RISE	SUR.: 0.0007065m2	Shielding Angle:

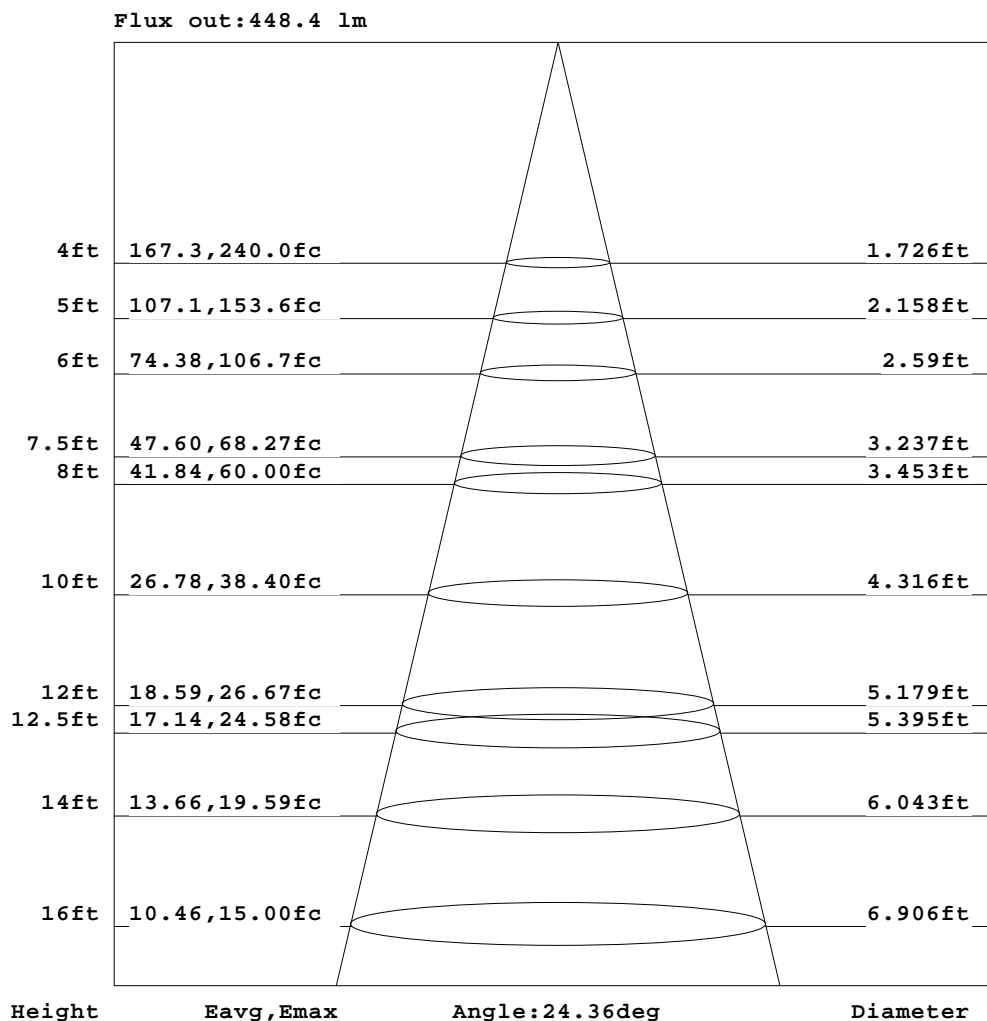


C Range: 0 - 360DEG
C Interval: 30.0DEG
Test Speed: HIGH
Temperature:25.3℃
Operators:zoe
Test Date:2023-12-16

Range: 0 - 180DEG
Interval: 1.0DEG
Test System:EVERFINE GO-SPEX500_V1 SYSTEM V2.00.461
Humidity:65.0%
Test Distance:3.160m [K=1.0000]
Remarks: LAMP:BXRE-30G1000-A-83 Ra:90
LENS:PM-1082 15R
DRIVER:PUP20A-1WMC 350mA
30minutes warm-up

AAI Figure

Test:U:120.13V I:0.1160A P:13.813W PF:0.9900 Freq:59.98Hz Lamp Flux:1402.44x1 lm		
NAME: 2318.115-LEA-14	TYPE:	WEIGHT:
SPEC.: 3000K	DIM.:	SERIAL No.: 2312161455
MFR.: RISE	SUR.: 0.0007065m2	Shielding Angle:



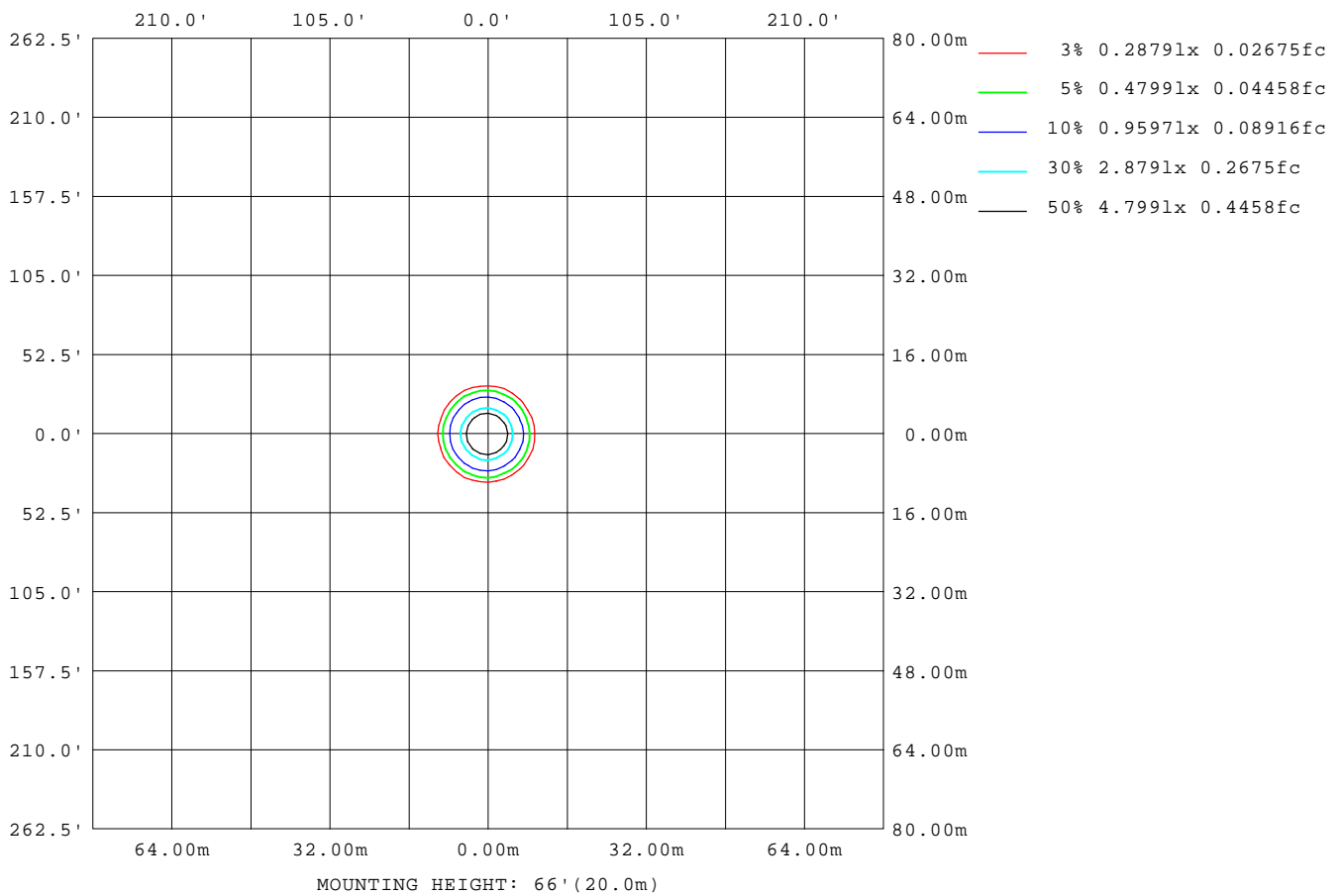
Note: The Curves indicate the illuminated area and the average illumination when the luminaire is at different distance.

C Range: 0 - 360DEG
C Interval: 30.0DEG
Test Speed: HIGH
Temperature: 25.3°C
Operators: zoe
Test Date: 2023-12-16

Range: 0 - 180DEG
Interval: 1.0DEG
Test System: EVERFINE GO-SPEX500_V1 SYSTEM V2.00.461
Humidity: 65.0%
Test Distance: 3.160m [K=1.0000]
Remarks: LAMP: BXRE-30G1000-A-83 Ra: 90
LENS: PM-1082 15R
DRIVER: PUP20A-1WMC 350mA
30minutes warm-up

ISOLUX DIAGRAM

Test:U:120.13V I:0.1160A P:13.813W PF:0.9900 Freq:59.98Hz Lamp Flux:1402.44x1 lm		
NAME: 2318.115-LEA-14	TYPE:	WEIGHT:
SPEC.: 3000K	DIM.:	SERIAL No.: 2312161455
MFR.: RISE	SUR.: 0.0007065m2	Shielding Angle:



C Range: 0 - 360DEG
C Interval: 30.0DEG
Test Speed: HIGH
Temperature:25.3°C
Operators:zoe
Test Date:2023-12-16

Range: 0 - 180DEG
Interval: 1.0DEG
Test System:EVERFINE GO-SPEX500_V1 SYSTEM V2.00.461
Humidity:65.0%
Test Distance:3.160m [K=1.0000]
Remarks: LAMP:BXRE-30G1000-A-83 Ra:90
LENS:PM-1082 15R
DRIVER:PUP20A-1WMC 350mA
30minutes warm-up

LED Avg.L Report

Test:U:120.13V I:0.1160A P:13.813W PF:0.9900 Freq:59.98Hz Lamp Flux:1402.44x1 lm		
NAME: 2318.115-LEA-14	TYPE:	WEIGHT:
SPEC.: 3000K	DIM.:	SERIAL No.: 2312161455
MFR.: RISE	SUR.: 0.0007065m2	Shielding Angle:

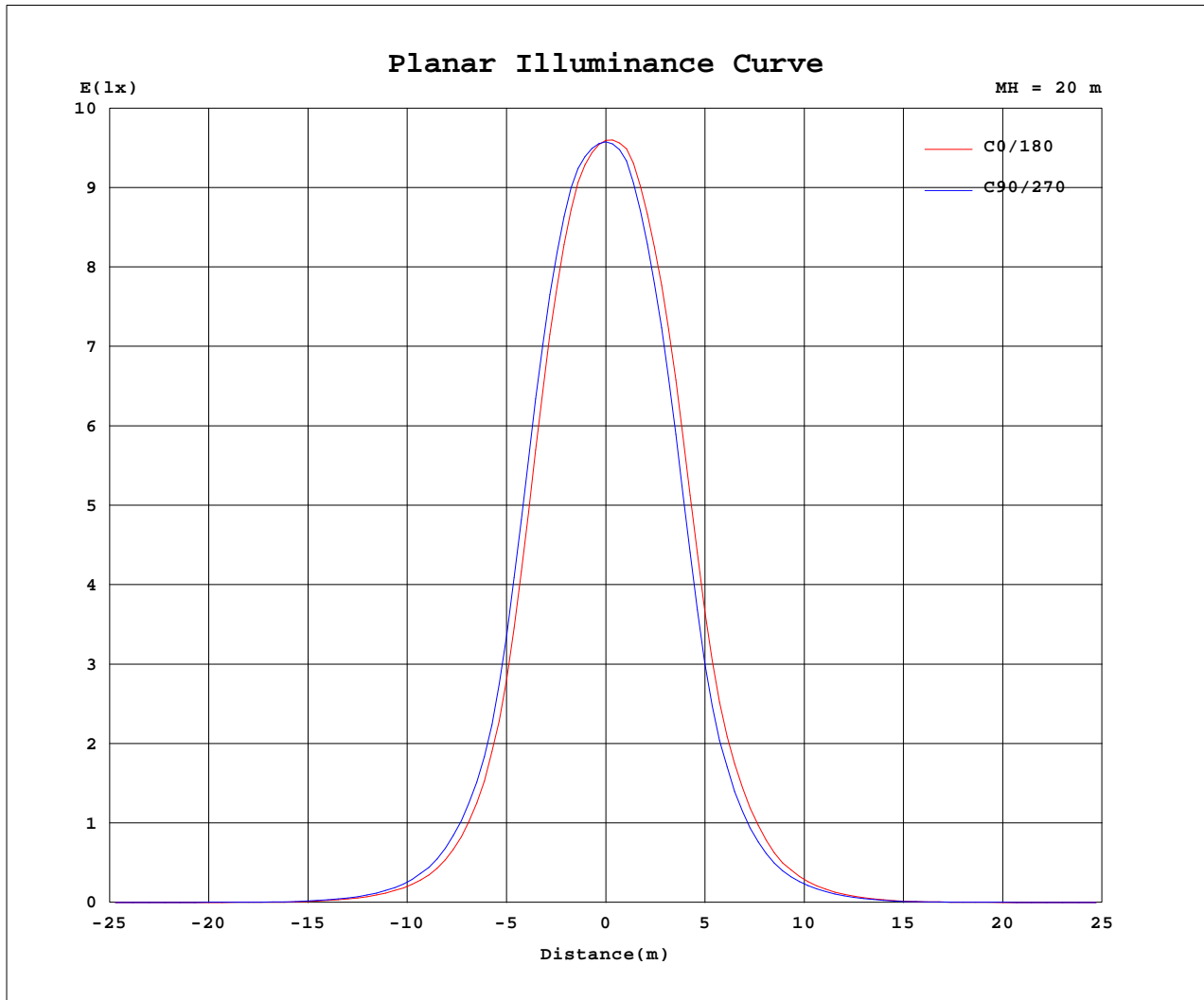
AvgL	cd/m2
L_0~180(65)av	1313
L_0~180(75)av	829
L_0~180(85)av	441
L_90~270(65)av	1571
L_90~270(75)av	860
L_90~270(85)av	437
L_45(65)av	1592
L_45(75)av	865
L_45(85)av	257

Standard: GB/T 29293-2012

C Range: 0 - 360DEG
C Interval: 30.0DEG
Test Speed: HIGH
Temperature:25.3℃
Operators:zoe
Test Date:2023-12-16

Range: 0 - 180DEG
Interval: 1.0DEG
Test System:EVERFINE GO-SPEX500_V1 SYSTEM V2.00.461
Humidity:65.0%
Test Distance:3.160m [K=1.0000]
Remarks: LAMP:BXRE-30G1000-A-83 Ra:90
LENS:PM-1082 15R
DRIVER:PUP20A-1WMC 350mA
30minutes warm-up

Planar Illuminance Curve



C Range: 0 - 360DEG
 C Interval: 30.0DEG
 Test Speed: HIGH
 Temperature: 25.3 °C
 Operators: zoe
 Test Date: 2023-12-16

Range: 0 - 180DEG
 Interval: 1.0DEG
 Test System: EVERFINE GO-SPEX500_V1 SYSTEM V2.00.461
 Humidity: 65.0%
 Test Distance: 3.160m [K=1.0000]
 Remarks: LAMP: BXRE-30G1000-A-83 Ra: 90
 LENS: PM-1082 15R
 DRIVER: PUP20A-1WMC 350mA
 30minutes warm-up

LUMINOUS DISTRIBUTION INTENSITY DATA

Test:U:120.13V I:0.1160A P:13.813W PF:0.9900 Freq:59.98Hz Lamp Flux:1402.44x1 lm		
NAME: 2318.115-LEA-14	TYPE:	WEIGHT:
SPEC.: 3000K	DIM.:	SERIAL No.: 2312161455
MFR.: RISE	SUR.: 0.0007065m2	Shielding Angle:

Table--1

UNIT: cd

C(DEG) (DEG)	0	30	60	90	120	150	180	210	240	270	300	330						
0	3834	3834	3834	3834	3834	3834	3834	3834	3834	3834	3834	3834						
5	3525	3567	3599	3644	3673	3681	3644	3597	3569	3527	3506	3504						
10	2383	2462	2534	2657	2750	2798	2752	2663	2596	2471	2385	2341						
15	1015	1081	1124	1223	1307	1377	1352	1279	1222	1100	1034	987						
20	400	433	456	497	543	576	574	547	512	454	426	391						
25	153	166	176	197	213	226	222	210	203	176	164	148						
30	58.9	64.6	68.1	75.0	84.4	84.4	81.9	81.5	75.7	66.8	62.6	56.6						
35	19.4	21.8	22.4	25.6	28.6	28.3	25.9	25.0	23.7	20.9	20.3	18.5						
40	5.65	5.56	5.55	6.85	8.61	7.93	6.84	7.41	7.53	6.99	6.96	6.20						
45	3.59	3.29	3.30	4.48	5.94	5.12	4.24	5.06	5.18	4.67	4.57	4.13						
50	1.91	1.52	1.59	2.50	3.71	2.85	2.19	2.74	3.04	2.59	2.65	2.03						
55	0.35	0.29	0.33	0.63	1.25	1.25	0.99	0.94	0.97	1.14	1.24	0.72						
60	0.28	0.23	0.26	0.46	0.93	0.92	0.77	0.74	0.77	0.87	0.94	0.55						
65	0.23	0.19	0.21	0.34	0.63	0.64	0.55	0.54	0.55	0.59	0.62	0.37						
70	0.15	0.14	0.15	0.22	0.38	0.39	0.36	0.34	0.35	0.36	0.35	0.22						
75	0.10	0.11	0.10	0.13	0.19	0.21	0.20	0.18	0.18	0.19	0.17	0.11						
80	0.07	0.06	0.06	0.07	0.09	0.09	0.09	0.07	0.07	0.08	0.06	0.05						
85	0.03	0.02	0.03	0.04	0.03	0.03	0.03	0.01	0.01	0.02	0.01	0.01						
90	0.00	0.00	0.00	0.00	0.00	0.00	0.00	0.00	0.00	0.00	0.00	0.00						
95	0.00	0.00	0.00	0.00	0.00	0.00	0.00	0.00	0.00	0.00	0.00	0.00						
100	0.00	0.00	0.00	0.00	0.00	0.00	0.00	0.00	0.00	0.00	0.00	0.00						
105	0.00	0.00	0.00	0.00	0.00	0.00	0.00	0.00	0.00	0.00	0.00	0.00						
110	0.00	0.00	0.00	0.00	0.00	0.00	0.00	0.00	0.00	0.00	0.00	0.00						
115	0.00	0.00	0.00	0.00	0.00	0.00	0.00	0.00	0.00	0.00	0.00	0.00						
120	0.00	0.00	0.00	0.00	0.00	0.00	0.00	0.00	0.00	0.00	0.00	0.00						
125	0.00	0.00	0.00	0.00	0.00	0.00	0.00	0.00	0.00	0.00	0.00	0.00						
130	0.00	0.00	0.00	0.00	0.00	0.00	0.00	0.00	0.00	0.00	0.00	0.00						
135	0.00	0.00	0.00	0.00	0.00	0.00	0.00	0.00	0.00	0.00	0.00	0.00						
140	0.00	0.00	0.00	0.00	0.00	0.00	0.00	0.00	0.00	0.00	0.00	0.00						
145	0.00	0.00	0.00	0.00	0.00	0.00	0.00	0.00	0.00	0.00	0.00	0.00						
150	0.00	0.00	0.00	0.00	0.00	0.00	0.00	0.00	0.00	0.00	0.00	0.00						
155	0.00	0.00	0.00	0.00	0.00	0.00	0.00	0.00	0.00	0.00	0.00	0.00						
160	0.00	0.00	0.00	0.00	0.00	0.00	0.00	0.00	0.00	0.00	0.00	0.00						
165	0.00	0.00	0.00	0.00	0.00	0.00	0.00	0.00	0.00	0.00	0.00	0.00						
170	0.00	0.00	0.00	0.00	0.00	0.00	0.00	0.00	0.00	0.00	0.00	0.00						
175	0.00	0.00	0.00	0.00	0.00	0.00	0.00	0.00	0.00	0.00	0.00	0.00						
180	0.00	0.00	0.00	0.00	0.00	0.00	0.00	0.00	0.00	0.00	0.00	0.00						

C Range: 0 - 360DEG
C Interval: 30.0DEG
Test Speed: HIGH
Temperature:25.3℃
Operators:zoe
Test Date:2023-12-16

Range: 0 - 180DEG
Interval: 1.0DEG
Test System:EVERFINE GO-SPEX500_V1 SYSTEM V2.00.461
Humidity:65.0%
Test Distance:3.160m [K=1.0000]
Remarks: LAMP:BXRE-30G1000-A-83 Ra:90
LENS:PM-1082 15R
DRIVER:PUP20A-1WMC 350mA
30minutes warm-up